

Welding Mandrel ESD

Specified Usage

To prevent deformation of the fitting during the welding process we recommend the usage of our adapted welding mandrel. Due to the brass swivel the temperature will be dissipated and deformation therefore be avoided.

Welding and Mounting Instructions

For welding into **vessels** please use our fittings **EMZ-..., EMK-... or KEM-...**

For welding into **pipes** please use our fittings **EMZ-... or KEM-...;**
if the pipe is pulled out please use **EMS-...**

1. Drill a hole with the external diameter of the fitting, max. tolerance: +0,2 mm
2. Fix the fitting with 4 points (see fig. 1)
3. Screw in the welding mandrel
4. Weld the sections between the points (see fig. 2)
4 sections if M12 or G1/2"
8 sections if G1"

Important



To prevent deformation of the fitting the pauses between the sections should be long enough for the fitting to cool down.

Welding Mandrel ESD-030, ESD-130, ESD-350



Figure 1

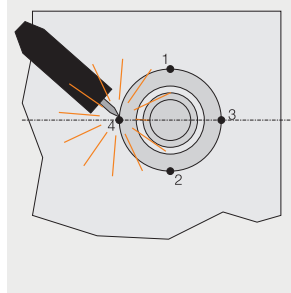
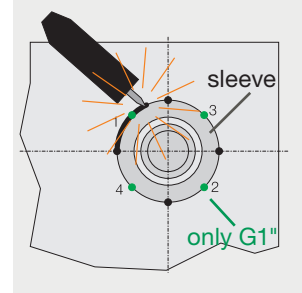


Figure 2



Re-Sharpening tool for CLEANadapt

Specified Usage

By using the re-sharpening tool you can try to rework a slightly deformed sealing edge in order to still achieve a sealed process.

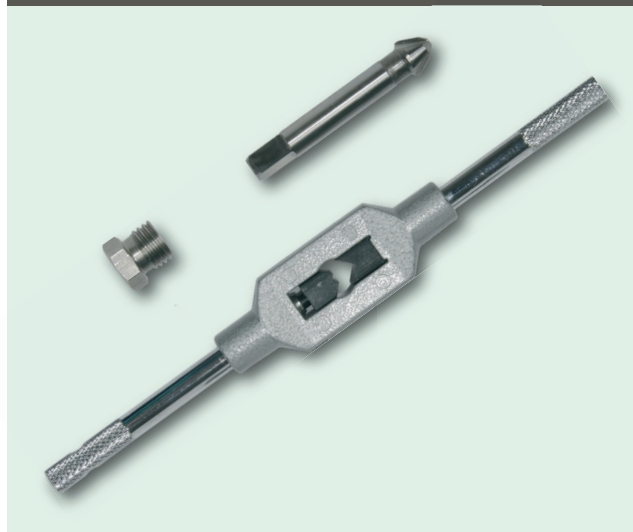
Important



The mounting of the sensors under the usage of Teflon tape should be avoided because:

- the faultfree sensor function is no longer guaranteed due to the isolating effect of the sealing tape.
- if the sealing edge isn't tight, the medium can infiltrate the weld-in sleeve and as a consequence germs can occur.

Re-Sharpening Tool NSW-030 for M12 x 1,5



Order Code Welding Mandrel ESD

Type	Specification
ESD-030	welding mandrel, brass, thread M12 x 1,5
ESD-130	welding mandrel, brass, thread G1/2"
ESD-350	welding mandrel, brass, thread G1"

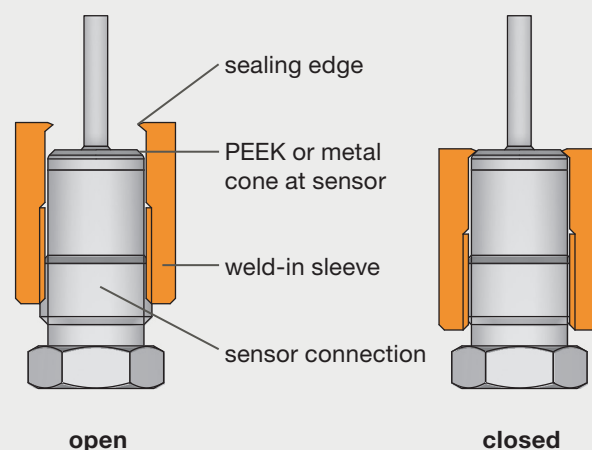
Order Code Re-Sharpener Tool NSW

Type	Specification
NSW-030	re-sharpening tool for thread M12 x 1,5 respectively EMS-032
NSW-130	re-sharpening tool for thread G1/2" respectively EMZ-132
NSW-350	re-sharpening tool for thread G1" respectively EMZ-352

CLEANadapt cross section | TFP-41 with EMZ-132



Schematic diagram of Negele CLEANadapt sealing principle



Contact



Negele Messtechnik GmbH

Raiffeisenweg 7
D-87743 Egg a. d. Günz

Telephone: +49 (0) 83 33 / 92 04-0
Fax: +49 (0) 83 33 / 92 04-49

E-Mail: pm@negele.net
Internet: www.negele.net

How to find us

